



GMT MONTHLY MEMBERSHIP PROGRESS REPORT

Results as of: 6/30/2020

GMT Constitutional Area 3, Group D

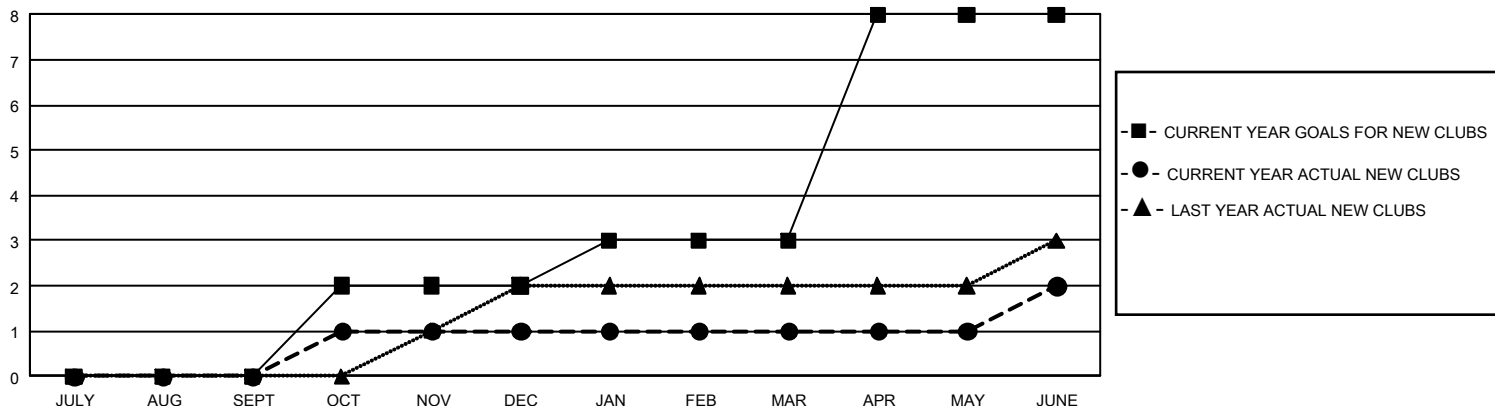
GMT: OPEN

REPORT DOES NOT INCLUDE CLUBS IN UNDISTRICTED AREAS.

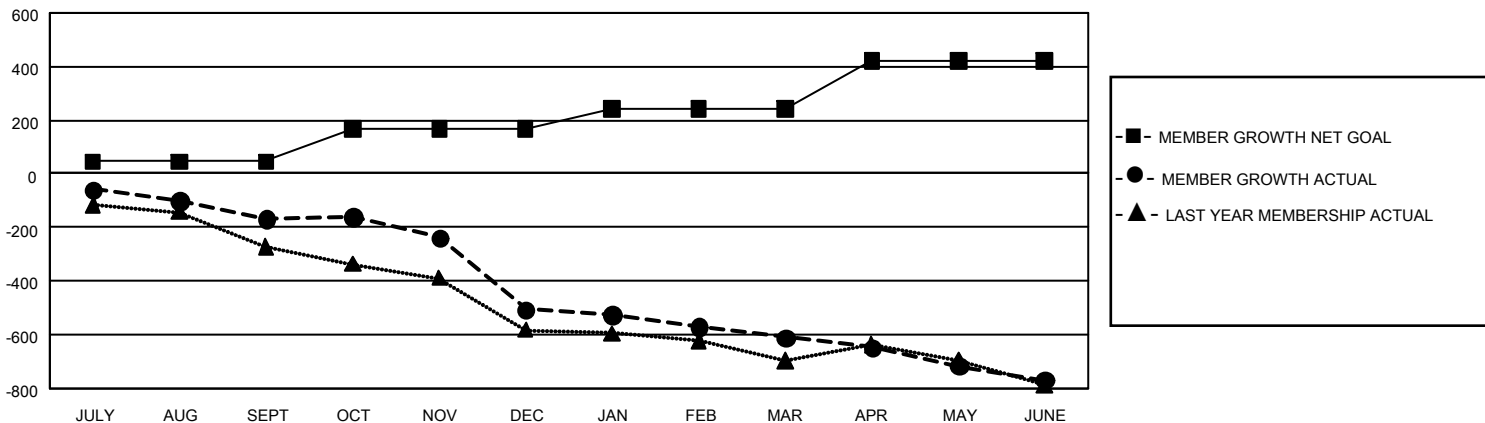
Clubs			
RESULTS FOR 2019-2020			
QUARTER	NEW CLUB GOAL	NEW CLUBS	DROPPED CLUBS
JULY/AUG/SEPT	0	0	4
OCT/NOV/DEC	6	1	13
JAN/FEB/MAR	3	0	3
APR/MAY/JUNE	15	1	7

Members			
RESULTS FOR 2019-2020			
QUARTER	MEMBER GROWTH NET GOAL	MEMBER GROWTH ACTUAL	DROPPED MEMBERS ACTUAL (including transfers)
JULY/AUG/SEPT	138	85	229
OCT/NOV/DEC	363	150	471
JAN/FEB/MAR	222	55	153
APR/MAY/JUNE	537	95	248

GOALS AND ACTUAL NEW CLUBS CUMULATIVE



GOALS AND ACTUAL MEMBERS CUMULATIVE



<p>DROPPED CLUBS: 26</p>	<p>104 CLUBS OF 277 ADDED 1 OR MORE NEW MEMBERS</p>	<p><u>GENDER DISTRIBUTION</u></p> <p>MALE 2,218 (49.98%)</p> <p>FEMALE 2,220 (50.02%)</p>	
		<p><u>DROPPED MEMBERS</u></p> <p>DECEASED 78</p> <p>CLUB CANCELLED 220</p> <p>OTHER 801</p> <hr/> <p>TOTAL 1,099</p>	<p>CLICK HERE FOR CUMULATIVE MEMBERSHIP DATA</p>